

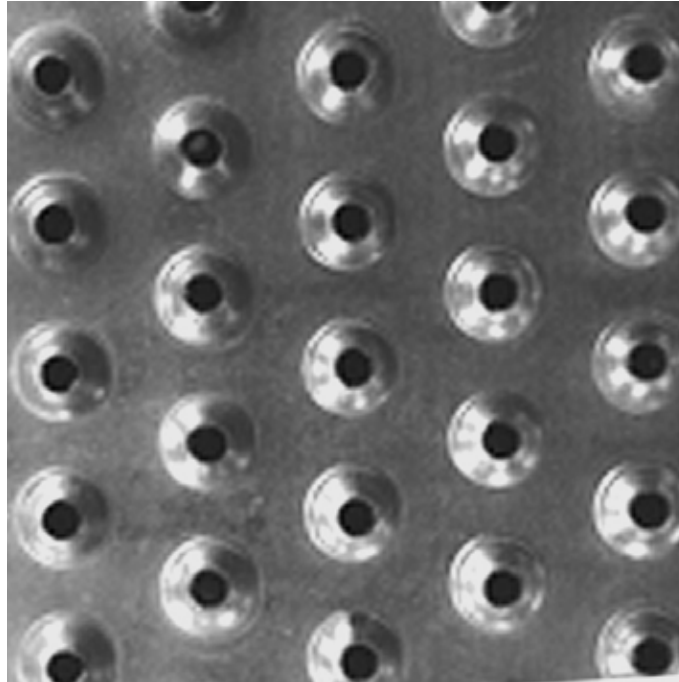
# SAFETY GRATING

DIRECT METALS®



We manufacture in accordance with NAAMM Standards

ISO 9001:2015 CERTIFIED



## TRACTION TREAD™ LADDER RUNG - 4-Row (2-1/4" Width) Plank

---

Product Line .....	Traction Tread™ Ladder Rung
Construction Type .....	Ladder Rung Plank
Series Type & Name .....	Ladder Rung Plank - Traction Tread™
Primary Material .....	Aluminum (AL)
Alloy, Grade or Type .....	Alloy 5052-H32 (5052H32)
Material Finish .....	Mill Finish
Gauge/Thickness .....	8 Gauge (.1250" Thick)
Surface Profile .....	4-Row (2-1/4" Width) Traction Tread™ Ladder Rung Plank
Surface Width .....	2-1/4"
Channel Depth .....	1-1/2"
Product Surface .....	Slip-Resistant
Percent Open Area .....	4%
Weight .....	2.80 Lbs./Each
Product Form .....	Rung Plank
Sizes (Width x Length) .....	2-1/4" x 48-3/4"