

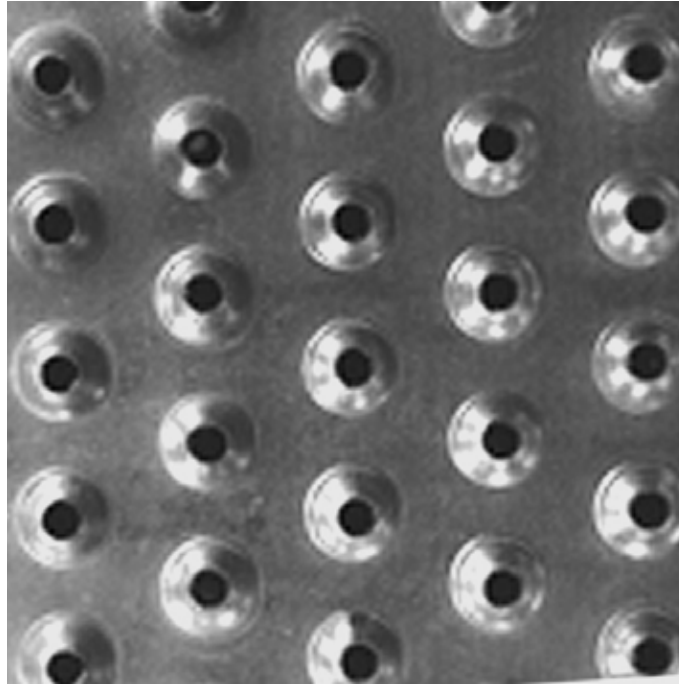
SAFETY GRATING

DIRECT METALS®



We manufacture in accordance with NAAMM Standards

ISO 9001:2015 CERTIFIED



TRACTION TREAD™ LADDER RUNG - 4-Row (2-1/4" Width) Plank

Product Line	Traction Tread™ Ladder Rung
Construction Type	Ladder Rung Plank
Series Type & Name	Ladder Rung Plank - Traction Tread™
Primary Material	Galvanized (GV)
Alloy, Grade or Type	ASTM A-924 (ASTMA924)
Material Finish	Mill Finish
Gauge/Thickness	13 Gauge (.0934" Thick)
Surface Profile	4-Row (2-1/4" Width) Traction Tread™ Ladder Rung Plank
Surface Width	2-1/4"
Channel Depth	1-1/2"
Product Surface	Slip-Resistant
Percent Open Area	4%
Weight	7.70 Lbs./Each
Product Form	Rung Plank
Sizes (Width x Length)	2-1/4" x 60"