

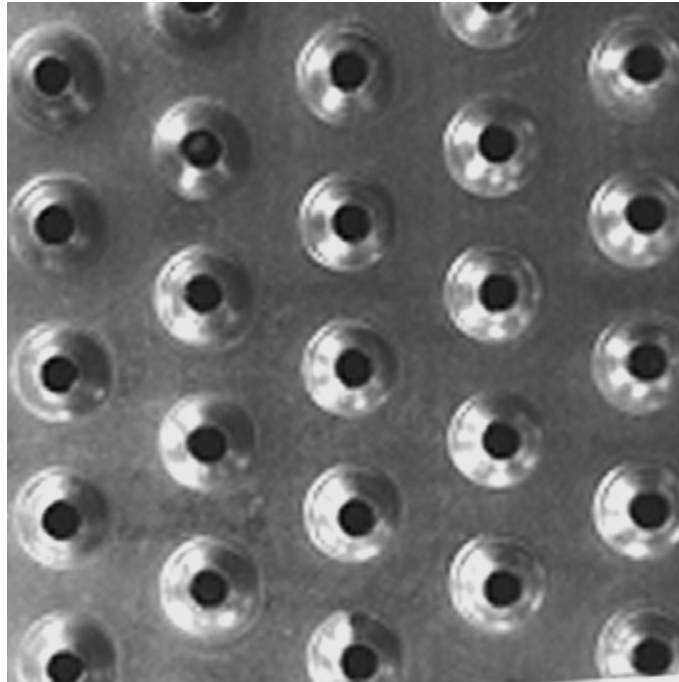
SAFETY GRATING

DIRECT METALS®



We manufacture in accordance with NAAMM Standards

ISO 9001:2015 CERTIFIED



TRACTION TREAD™ LADDER RUNG - 3-Row (1-5/8" Width) Plank

Product Line	Traction Tread™ Ladder Rung
Construction Type	Ladder Rung Plank
Series Type & Name	Ladder Rung Plank - Traction Tread™
Primary Material	Stainless Steel (SS)
Alloy, Grade or Type	Type 304 (304)
Material Finish	Mill Finish
Gauge/Thickness	14 Gauge (.0781" Thick)
Surface Profile	3-Row (1-5/8" Width) Traction Tread™ Ladder Rung Plank
Surface Width	1-5/8"
Channel Depth	1-1/8"
Product Surface	Slip-Resistant
Percent Open Area	3%
Weight	3.80 Lbs./Each
Product Form	Rung Plank
Sizes (Width x Length)	1-5/8" x 48-3/4"