

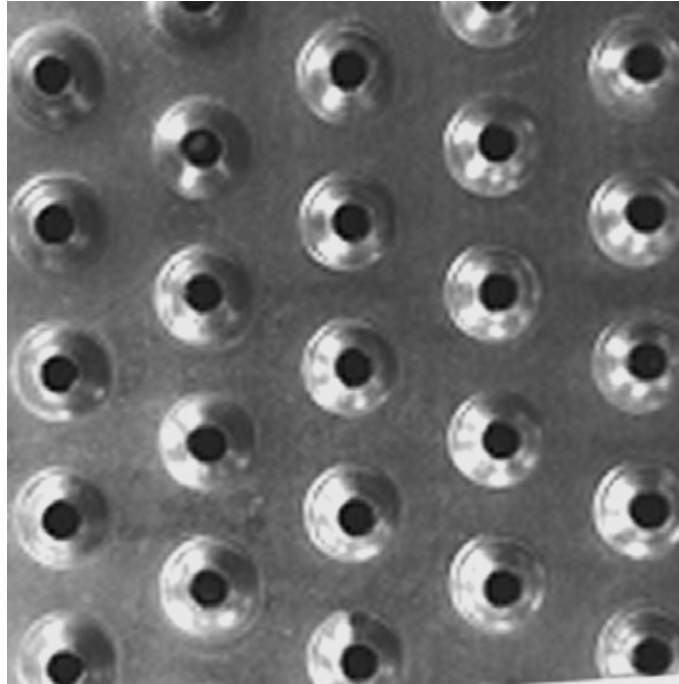
SAFETY GRATING

DIRECT METALS®



We manufacture in accordance with NAAMM Standards

ISO 9001:2015 CERTIFIED



TRACTION TREAD™ LADDER RUNG - 3-Row (1-5/8" Width) Plank

| | |
|------------------------------|--|
| Product Line | Traction Tread™ Ladder Rung |
| Construction Type | Ladder Rung Plank |
| Series Type & Name | Ladder Rung Plank - Traction Tread™ |
| Primary Material | Galvanized (GV) |
| Alloy, Grade or Type | ASTM A-924 (ASTMA924) |
| Material Finish | Mill Finish |
| Gauge/Thickness | 13 Gauge (.0934" Thick) |
| Surface Profile | 3-Row (1-5/8" Width) Traction Tread™ Ladder Rung Plank |
| Surface Width | 1-5/8" |
| Channel Depth | 1-1/8" |
| Product Surface | Slip-Resistant |
| Percent Open Area | 3% |
| Weight | 5.63 Lbs./Each |
| Product Form | Rung Plank |
| Sizes (Width x Length) | 1-5/8" x 60" |