

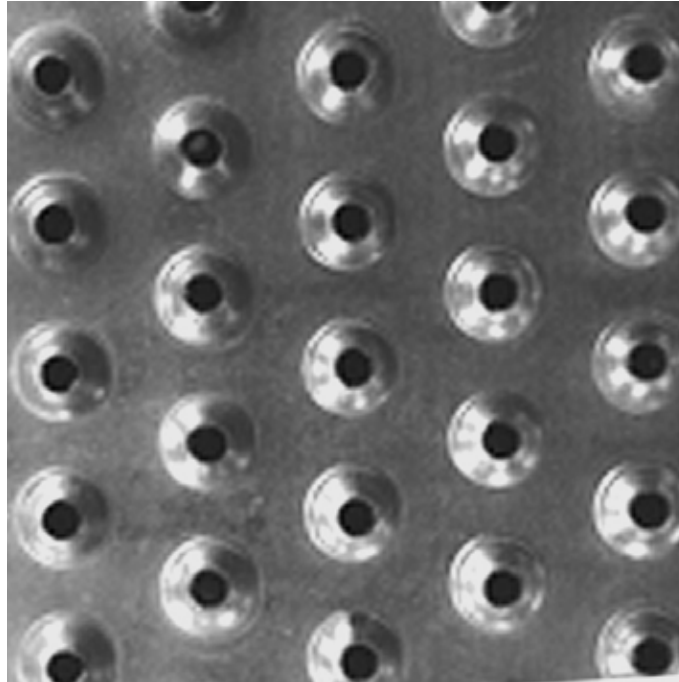
# SAFETY GRATING

DIRECT METALS®



We manufacture in accordance with NAAMM Standards

ISO 9001:2015 CERTIFIED



## **TRACTION TREAD™ LADDER RUNG** - 3-Row (1-5/8" Width) Plank

---

Product Line .....	Traction Tread™ Ladder Rung
Construction Type .....	Ladder Rung Plank
Series Type & Name .....	Ladder Rung Plank - Traction Tread™
Primary Material .....	Carbon Steel (CS)
Alloy, Grade or Type .....	Hot Rolled Pickled and Oiled (HRPO)
Material Finish .....	Mill Finish
Gauge/Thickness .....	13 Gauge (.0897" Thick)
Surface Profile .....	3-Row (1-5/8" Width) Traction Tread™ Ladder Rung Plank
Surface Width .....	1-5/8"
Channel Depth .....	1-1/8"
Product Surface .....	Slip-Resistant
Percent Open Area .....	3%
Weight .....	5.50 Lbs./Each
Product Form .....	Rung Plank
Sizes (Width x Length) .....	1-5/8" x 60"