

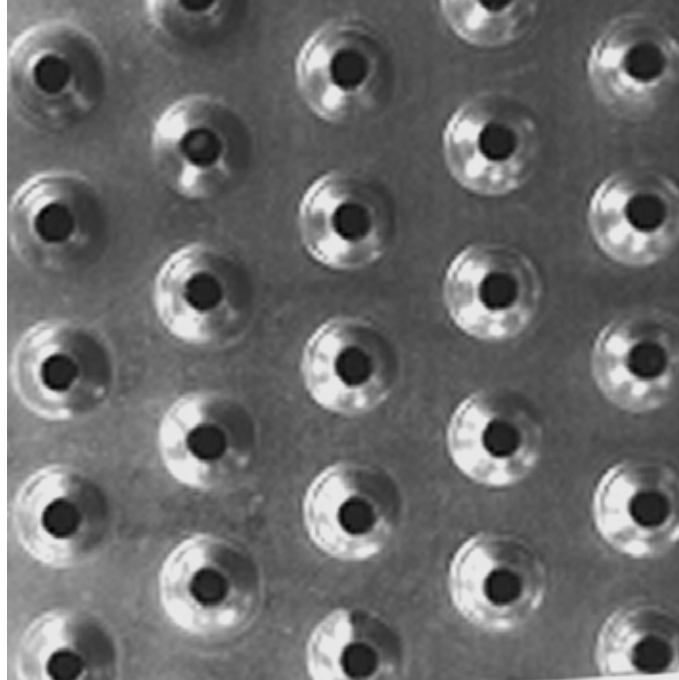
SAFETY GRATING

DIRECT METALS®



We manufacture in accordance with NAAMM Standards

ISO 9001:2015 CERTIFIED



TRACTION TREAD™ SAFETY GRATING - 17-Row (12" Width) Plank

Product LineTraction Tread™ Safety Grating
Construction TypePlank
Series Type & NamePlank - Traction Tread™
Primary MaterialGalvanized (GV)
Alloy, Grade or TypeASTM A-924 (ASTMA924)
Material FinishMill Finish
Gauge/Thickness11 Gauge (.1233" Thick)
Surface Profile17-Row (12" Width) Traction Tread™ Plank
Surface Width12"
Channel Depth2"
Product SurfaceSlip Resistant
Percent Open Area3%
Weight7.30 Lbs./Linear Foot
Product FormPlank
Sizes (Width x Length)12" x 120"; 12" x 144"

ADA-Compliant Product