

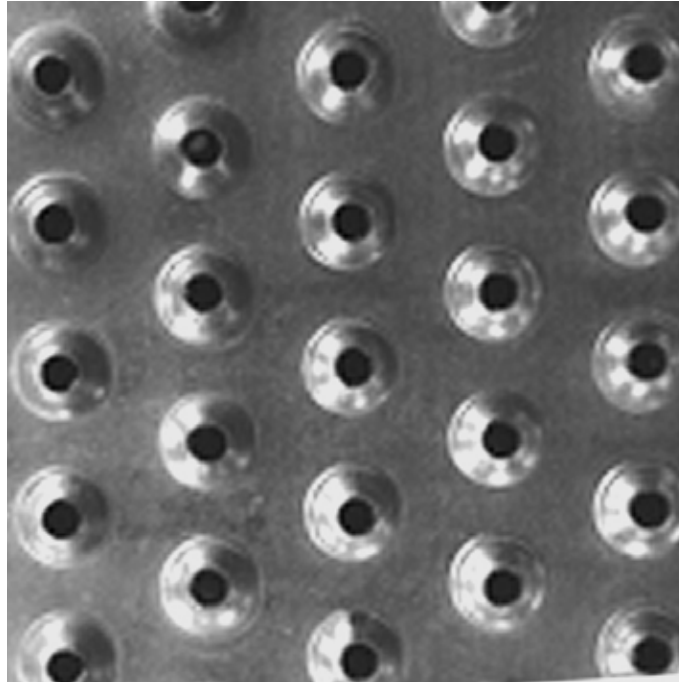
SAFETY GRATING

DIRECT METALS®



We manufacture in accordance with NAAMM Standards

ISO 9001:2015 CERTIFIED



TRACTION TREAD™ SAFETY GRATING - 17-Row (12" Width) Plank

Product LineTraction Tread™ Safety Grating
Construction TypePlank
Series Type & NamePlank - Traction Tread™
Primary MaterialGalvanized (GV)
Alloy, Grade or TypeASTM A-924 (ASTMA924)
Material FinishMill Finish
Gauge/Thickness11 Gauge (.1233" Thick)
Surface Profile17-Row (12" Width) Traction Tread™ Plank
Surface Width12"
Channel Depth1-1/2"
Product SurfaceSlip Resistant
Percent Open Area3%
Weight6.90 Lbs./Linear Foot
Product FormPlank
Sizes (Width x Length)12" x 120"; 12" x 144"

ADA-Compliant Product

CORPORATE - 3775 Cobb International Blvd. • Kennesaw, GA 30152-4390 • P: 800.711.4939

CHICAGO LOCATION - 3380 Grand Avenue • Waukegan, IL 60085 • P: 847.599.0233

info@directmetals.com • www.directmetals.com