

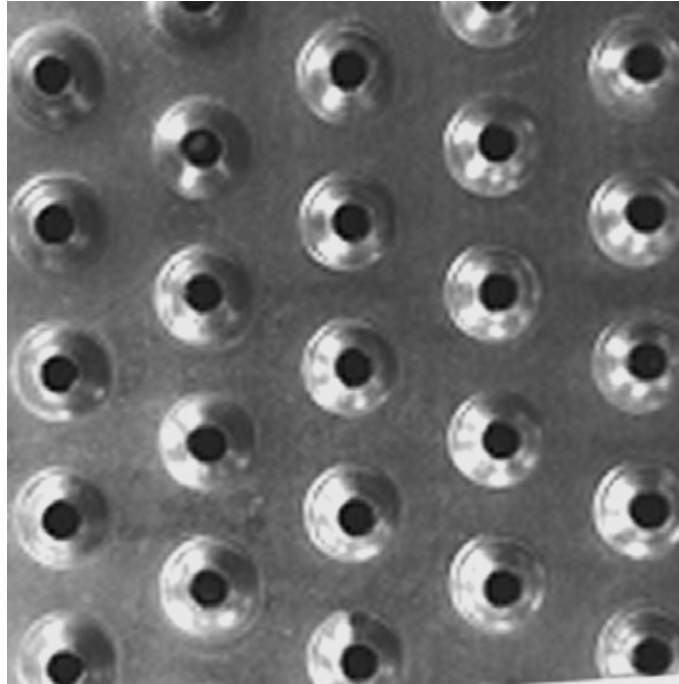
SAFETY GRATING

DIRECT METALS®



We manufacture in accordance with NAAMM Standards

ISO 9001:2015 CERTIFIED



TRACTION TREAD™ SAFETY GRATING - 14-Row (10" Width) Plank

Product LineTraction Tread™ Safety Grating
Construction TypePlank
Series Type & NamePlank - Traction Tread™
Primary MaterialAluminum (AL)
Alloy, Grade or TypeAlloy 5052-H32 (5052H32)
Material FinishMill Finish
Gauge/Thickness8 Gauge (.1250" Thick)
Surface Profile14-Row (10" Width) Traction Tread™ Plank
Surface Width10"
Channel Depth2"
Product SurfaceSlip Resistant
Percent Open Area3%
Weight1.90 Lbs./Linear Foot
Product FormPlank
Sizes (Width x Length)10" x 144"

ADA-Compliant Product