

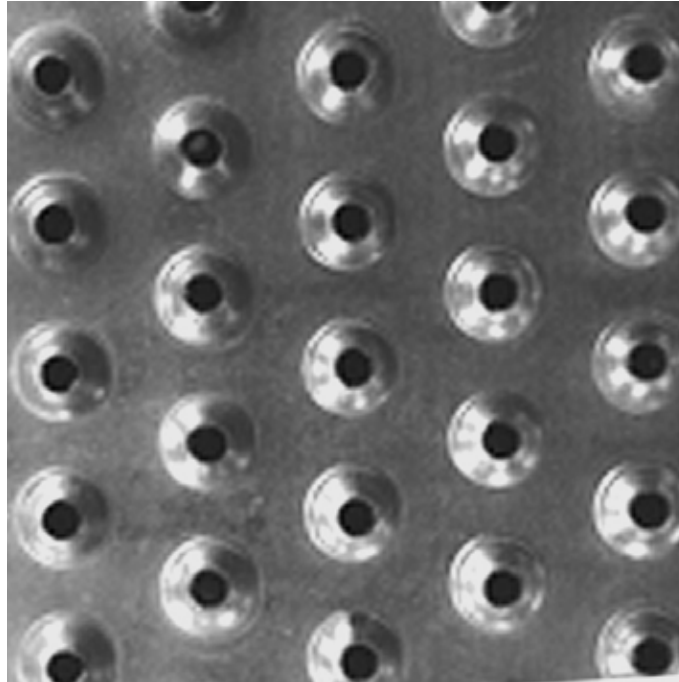
# SAFETY GRATING

DIRECT METALS®



We manufacture in accordance with NAAMM Standards

ISO 9001:2015 CERTIFIED



## TRACTION TREAD™ SAFETY GRATING - 14-Row (10" Width) Plank

Product Line .....Traction Tread™ Safety Grating  
Construction Type .....Plank  
Series Type & Name .....Plank - Traction Tread™  
Primary Material .....Galvanized (GV)  
Alloy, Grade or Type .....ASTM A-924 (ASTMA924)  
Material Finish .....Mill Finish  
Gauge/Thickness .....13 Gauge (.0934" Thick)  
Surface Profile .....14-Row (10" Width) Traction Tread™ Plank  
Surface Width .....10"  
Channel Depth .....1-1/2"  
Product Surface .....Slip Resistant  
Percent Open Area .....3%  
Weight .....4.60 Lbs./Linear Foot  
Product Form .....Plank  
Sizes (Width x Length) .....10" x 120"

ADA-Compliant Product