

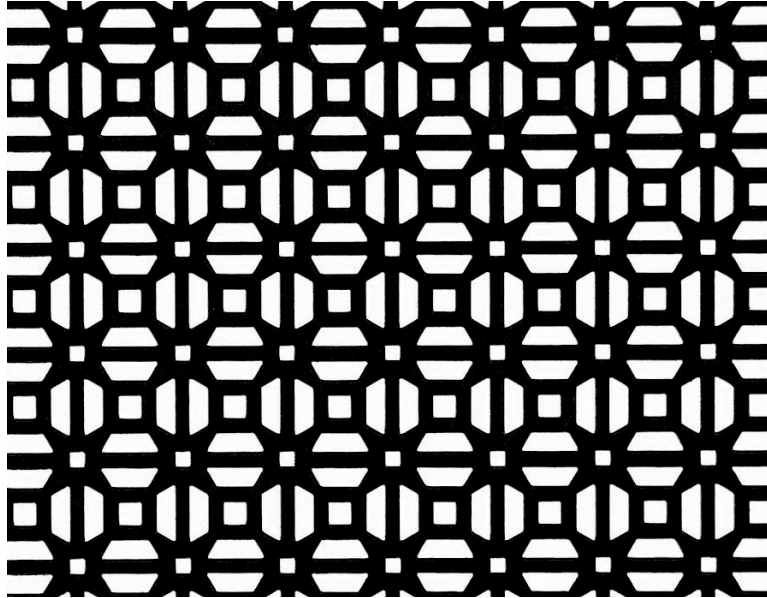
PERFORATED METAL

DIRECT METALS®



We manufacture in accordance with NAAMM Standards

ISO 9001:2015 CERTIFIED



PERFORATED METAL - 1" Square Mosaic

- Product LinePerforated Metal
- Hole TypeMosaic
- Primary MaterialCarbon Steel (CS)
- Alloy, Grade or TypeCold Rolled (CR)
- Material FinishMill Finish
- Gauge Thickness20 Gauge (.0359" Thick)
- Hole Pattern1" Square (Four 1/8" Squares, Trapezoids & One 3/16" Square)
- Hole ArrangementStaggered Centers
- Margins Parallel to WidthSheared Through Both Ends
- Margins Parallel to LengthMinimum Solid Both Sides
- End PatternSheared Through Both Ends
- Percent Open Area40%
- Weight.....0.90 Lbs./Square Foot
- Product FormSheet
- Sizes (Width x Length)48" x 24"; 48" x 96"

Direct Metals Company, LLC makes no representation or warranty (express or implied) regarding these drawings as they are conceptual in nature. It is the customer's responsibility to have all information and products verified to determine the suitability for the application. The customer assumes all risk and liability for any losses, claims or damage resulting from such use. Certain numbers may be rounded up or down for example purposes.