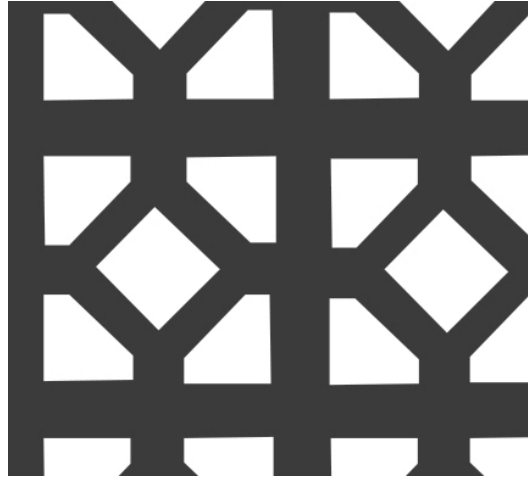


PERFORATED METAL



We manufacture in accordance with NAAMM Standards

ISO 9001:2015 CERTIFIED



PERFORATED METAL - 5/8" Square on 3/4" Straight Centers

| | |
|----------------------------------|--|
| Product Line | Perforated Metal |
| Hole Type | Windsor |
| Primary Material | Carbon Steel (CS) |
| Alloy, Grade or Type | Cold Rolled (CR) |
| Material Finish | Mill Finish |
| Gauge Thickness | 20 Gauge (.0359" Thick) |
| Hole Pattern | 5/8" Square (1/4" Interior Diamond) on 3/4" Straight Centers |
| Hole Size | 5/8" |
| Hole Centers | 3/4" |
| Bar Width | 1/8" |
| Hole Arrangement | Straight Centers |
| Margins Parallel to Width | Sheared Through Both Ends |
| Margins Parallel to Length | Minimum Solid Both Sides |
| End Pattern | Sheared Through Both Ends |
| Percent Open Area | 45% |
| Weight..... | 0.83 Lbs./Square Foot |
| Product Form | Sheet |
| Sizes (Width x Length) | 36" x 24"; 36" x 48"; 36" x 96" |

Direct Metals Company, LLC makes no representation or warranty (express or implied) regarding these drawings as they are conceptual in nature. It is the customer's responsibility to have all information and products verified to determine the suitability for the application. The customer assumes all risk and liability for any losses, claims or damage resulting from such use. Certain numbers may be rounded up or down for example purposes.